

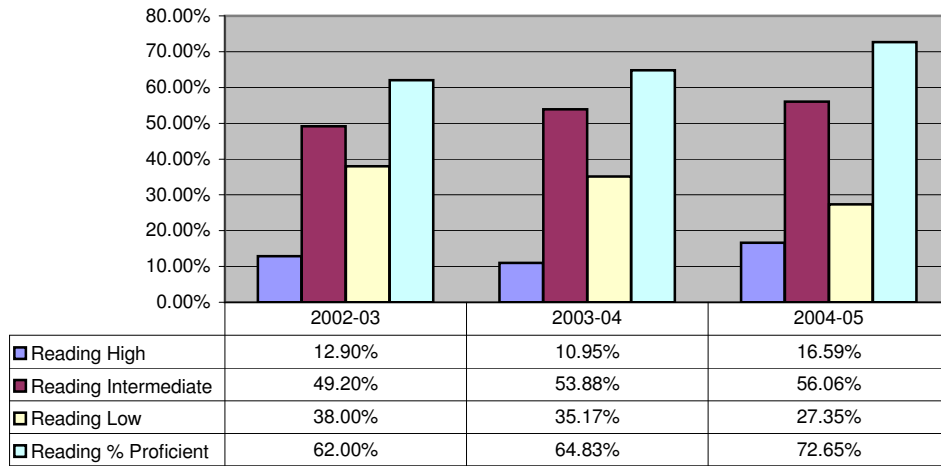
Annual Progress Report - 2004-2005 Academic Year:

ITBS Achievement Levels and Proficiency 4th Grade: Reading, Math, Science

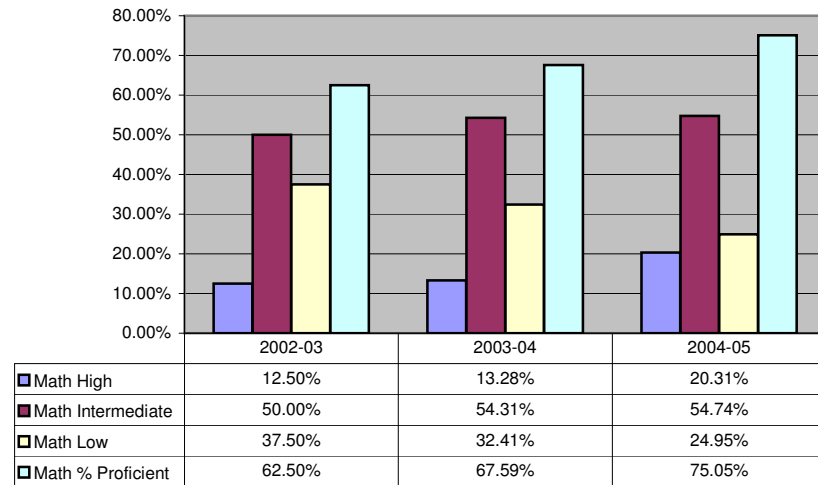
Trend Lines and Participation Rates - Grade 4

School Year	# Enrolled	# Part.	% Part.
2002-2003	1250	1230	98.40%
2003-2004	1165	1162	99.74%
2004-2005	1103	1098	99.55%

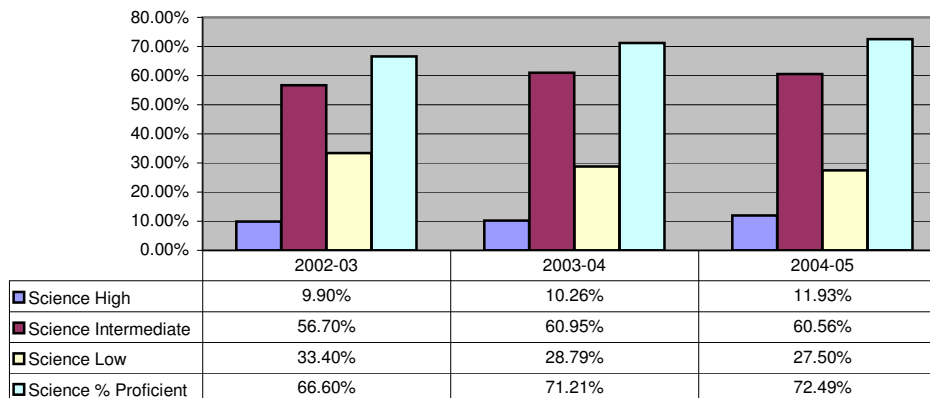
Reading Comprehension



Math Total



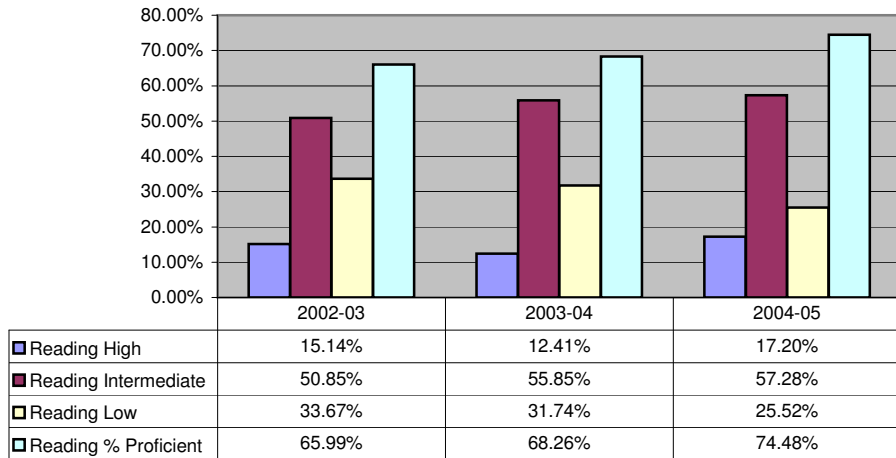
Science Total



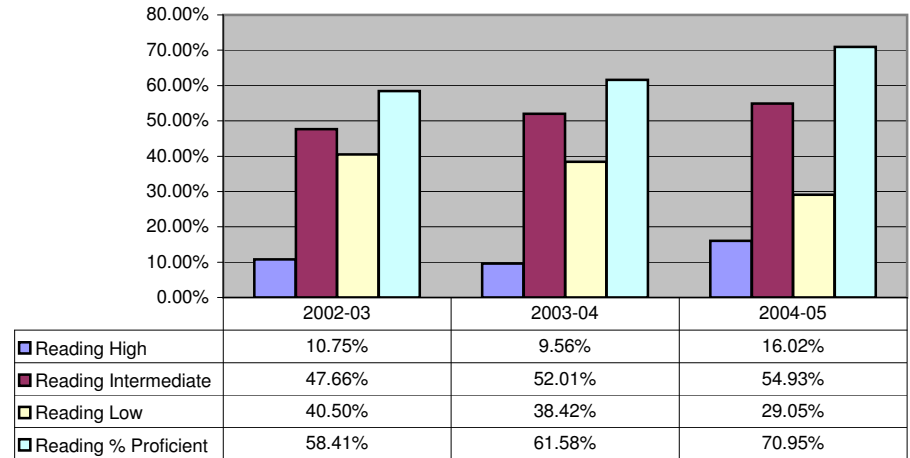
Annual Progress Report 2004-2005 Academic Year:

ITBS 4TH GRADE - Gender Disaggregated Achievement Data

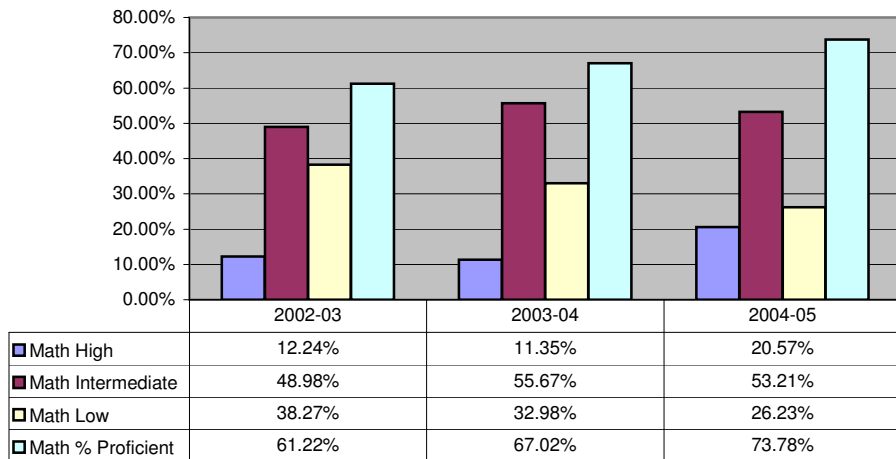
Female - Reading Comprehension



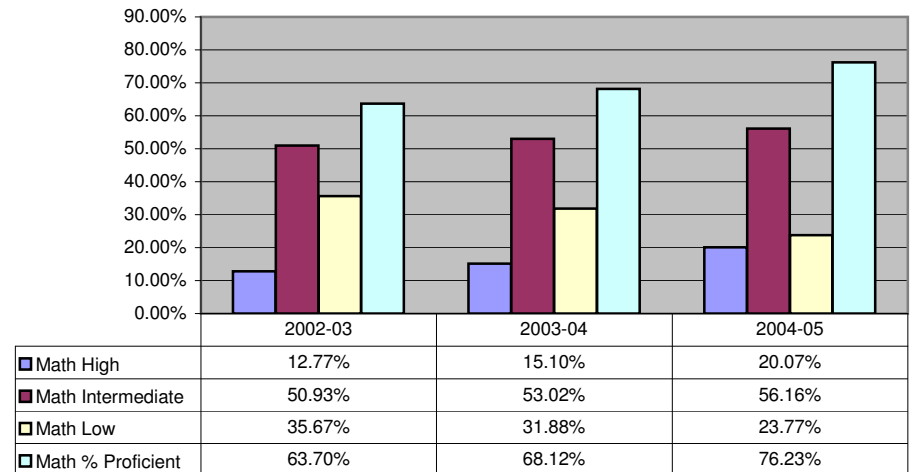
Male - Reading Comprehension



Female - Math Total

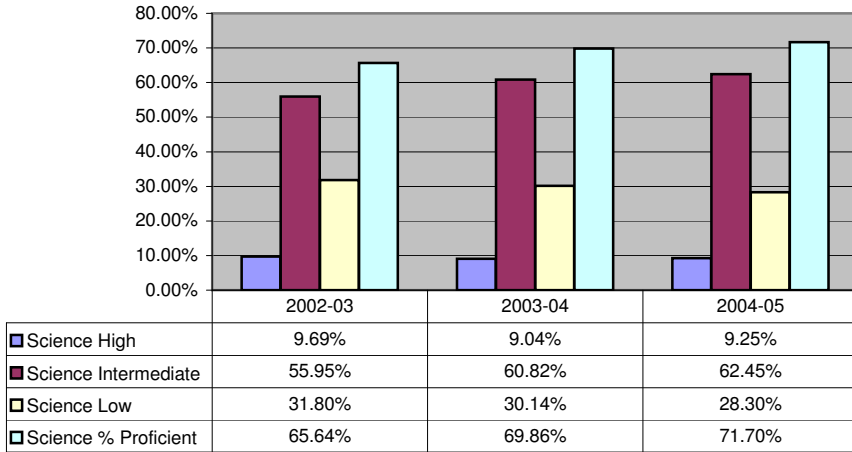


Male - Math Total

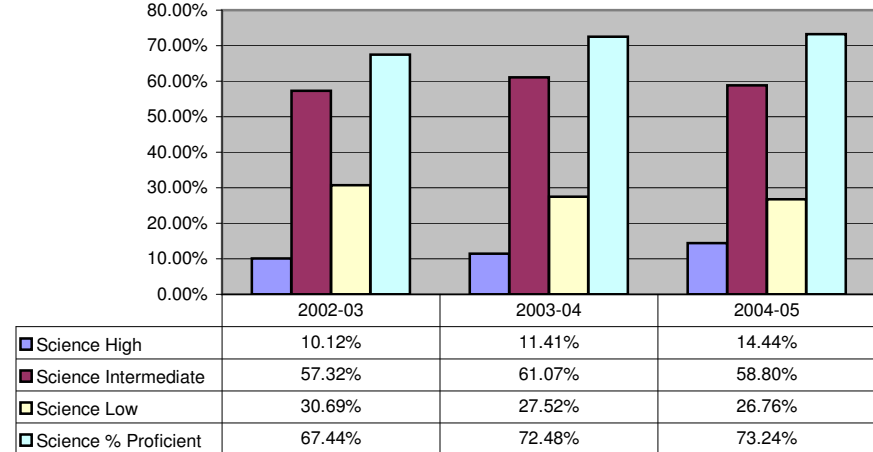


Annual Progress Report 2004-2005 Academic Year:
ITBS 4TH GRADE - Gender Disaggregated Achievement Data

Female - Science Total



Male - Science Total



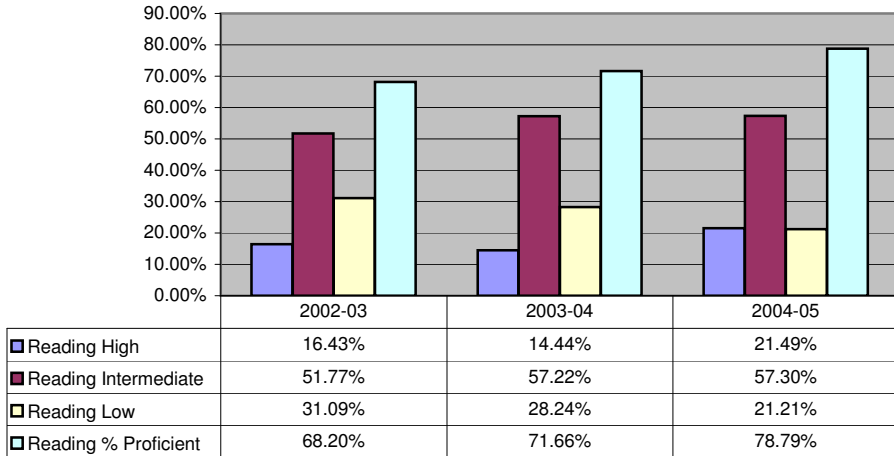
Gender Disaggregated Percent Participating - Grade 4

	Gender	# Part.	# Enrolled	% Part.
2002-2003	Female	588	589	99.83%
	Male	642	661	97.13%
	Total	1230	1250	98.40%
2003-2004	Female	566	567	99.82%
	Male	596	598	99.67%
	Total	1162	1165	99.74%
2004-2005	Female	530	533	99.44%
	Male	568	570	99.65%
	Total	1098	1103	99.55%

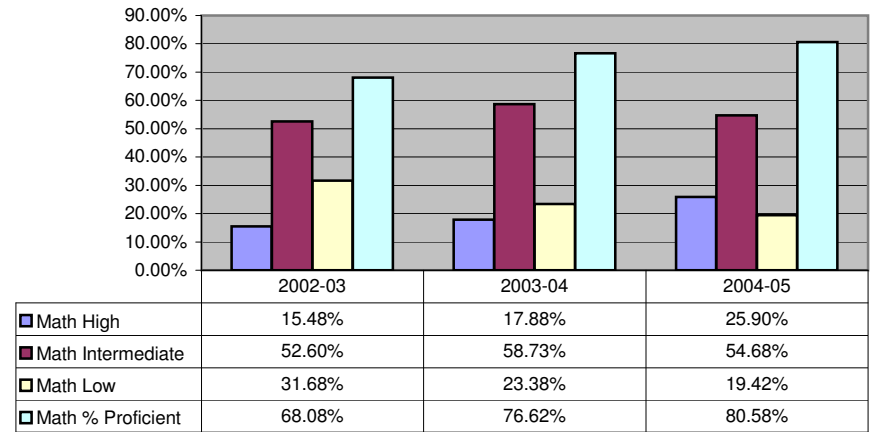
Annual Progress Report 2004-2005 Academic Year:

ITBS 4TH GRADE - Race/Ethnicity Disaggregated Achievement Data

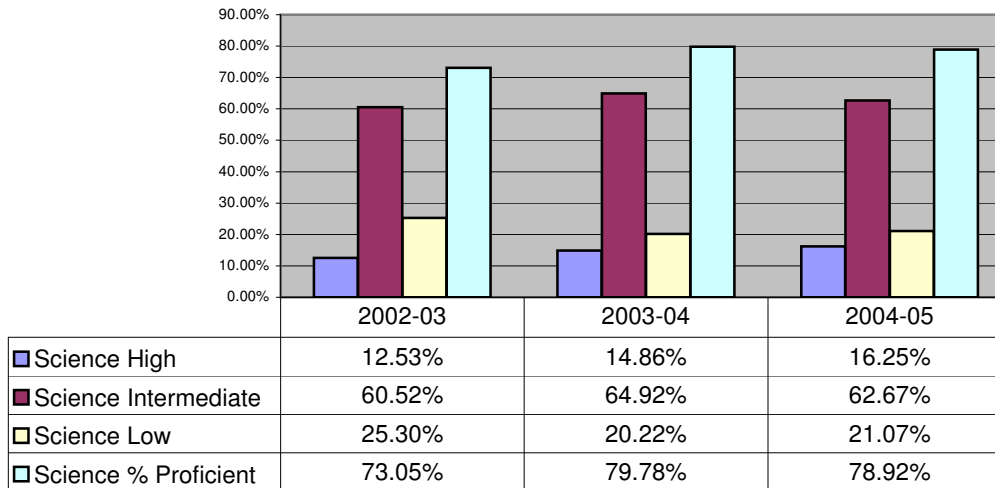
Euro American - Reading Comprehension



Eruo American - Math Total



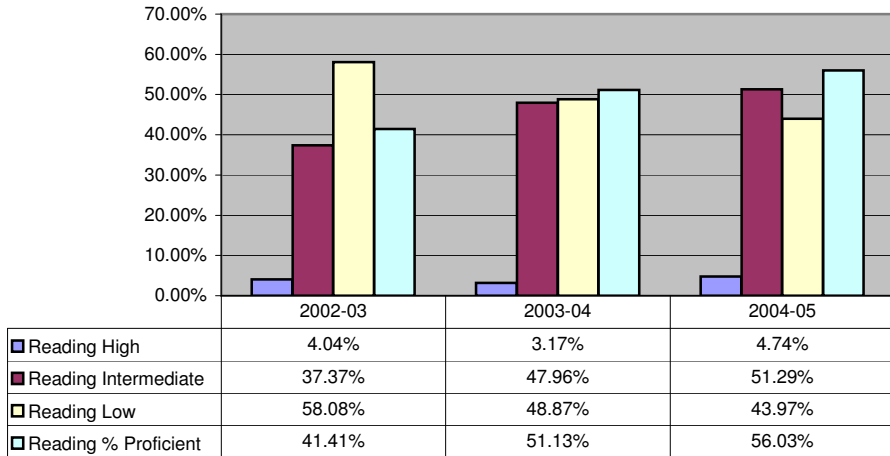
Euro American - Science Total



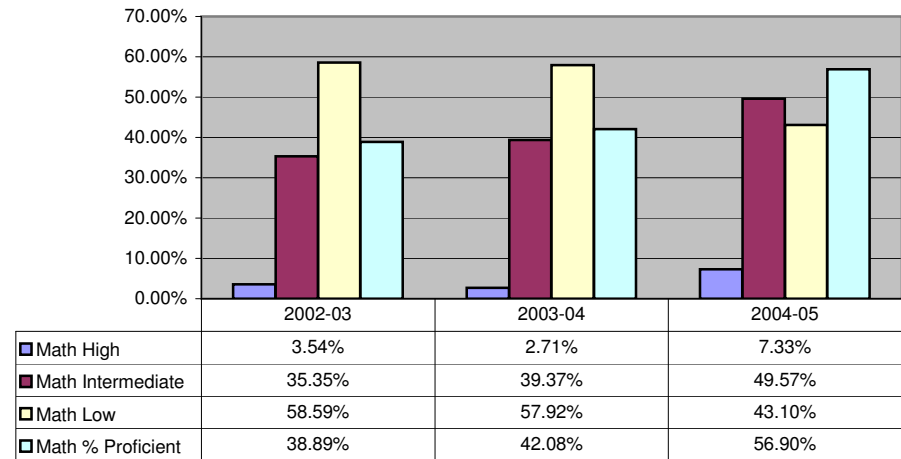
Annual Progress Report 2004-2005 Academic Year:

ITBS 4TH GRADE - Race/Ethnicity Disaggregated Achievement Data

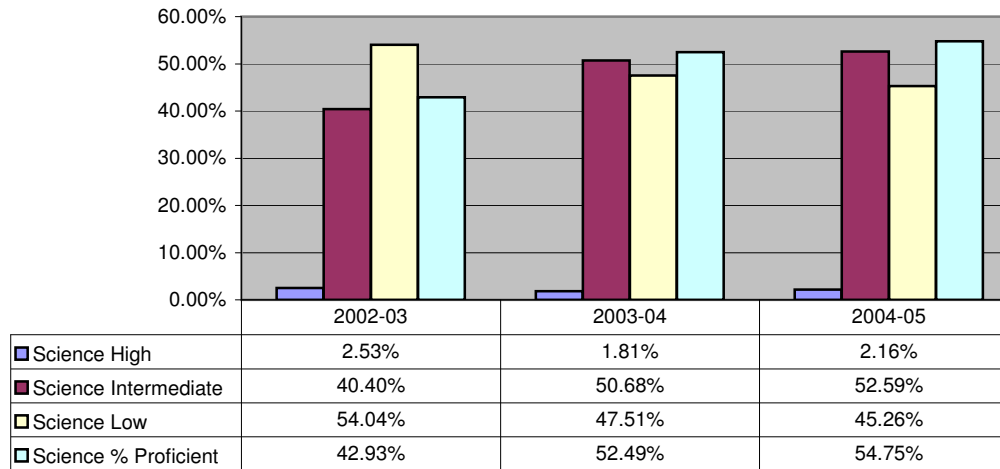
African American - Reading Comprehension



African American - Math Total



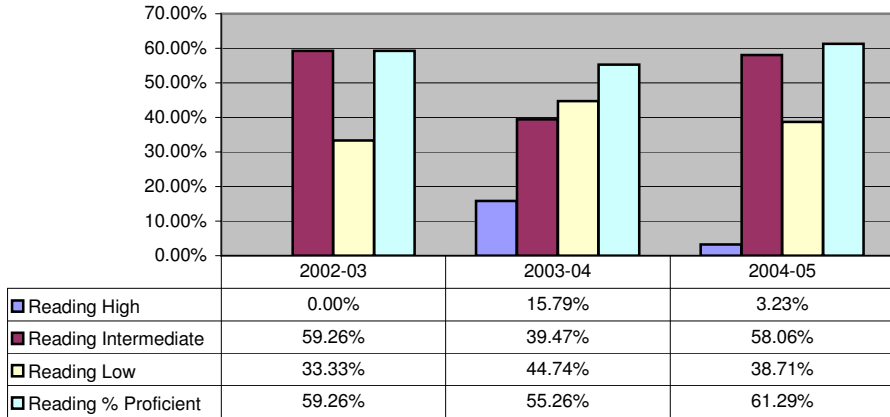
African American - Science Total



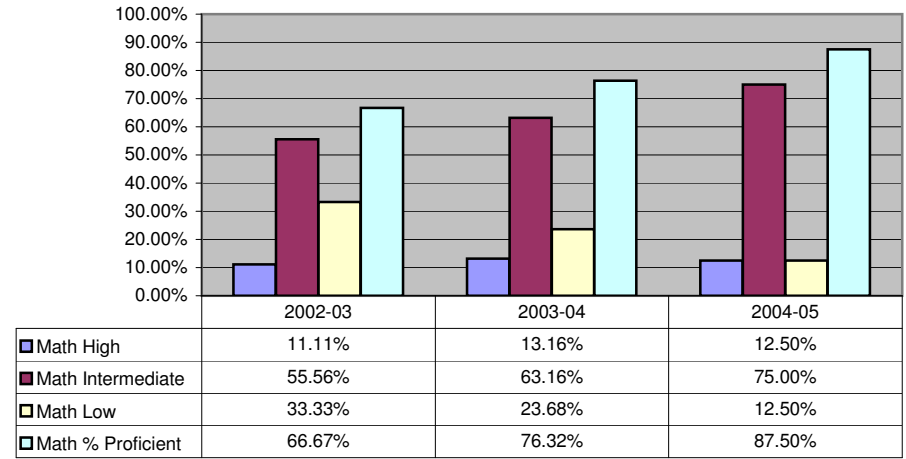
Annual Progress Report 2004-2005 Academic Year:

ITBS 4TH GRADE - Race/Ethnicity Disaggregated Achievement Data

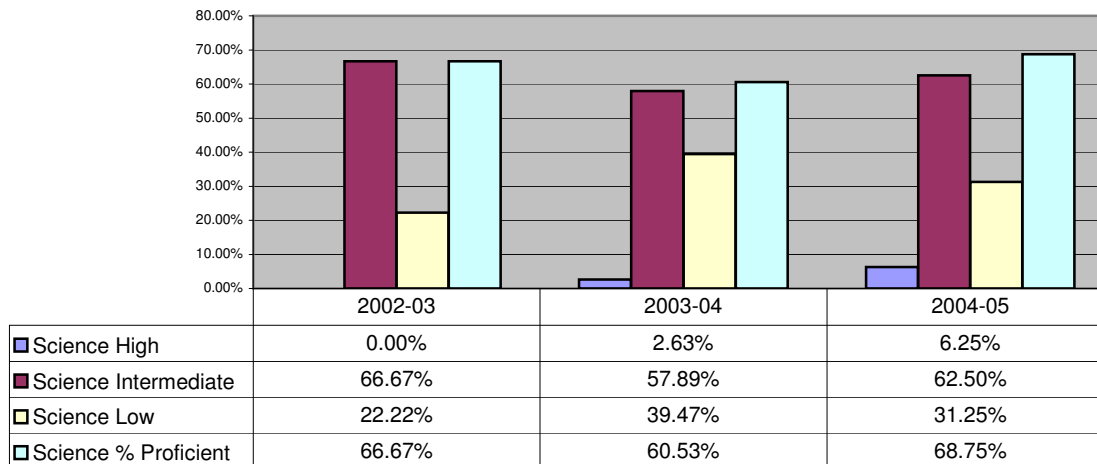
Asian American/Pacific Islander - Reading Comprehension



Asian American/Pacific Islander - Math Total



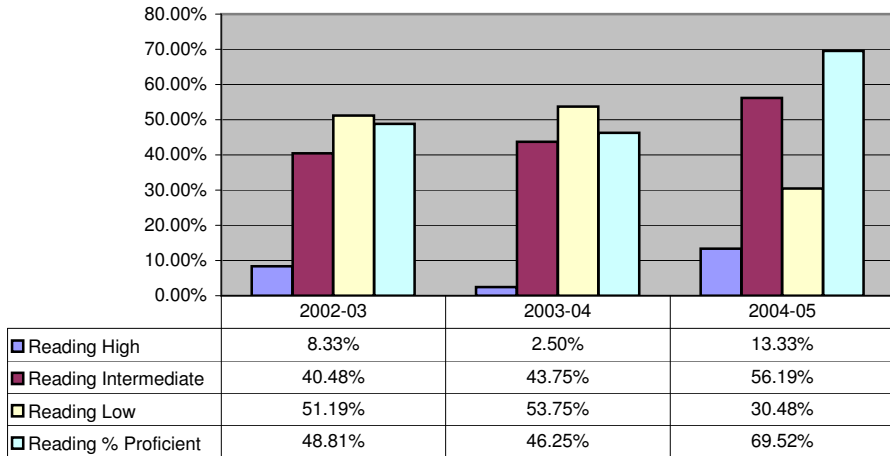
Asian American/Pacific Islander - Science Total



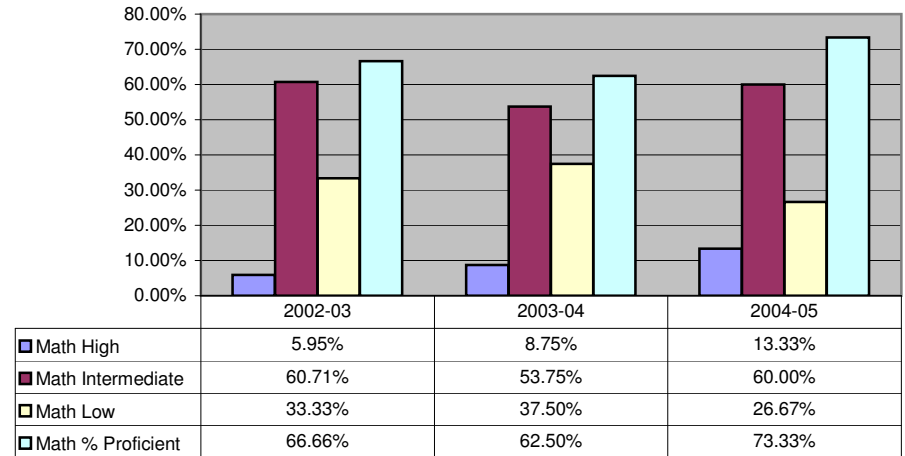
Annual Progress Report 2004-2005 Academic Year:

ITBS 4TH GRADE - Race/Ethnicity Disaggregated Achievement Data

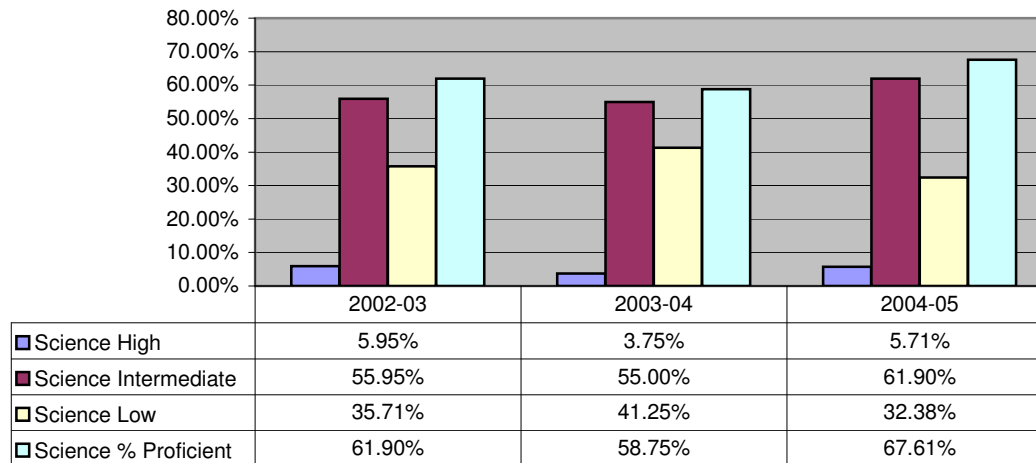
Hispanic/Latino - Reading Comprehension



Hispanic/Latino - Math Total



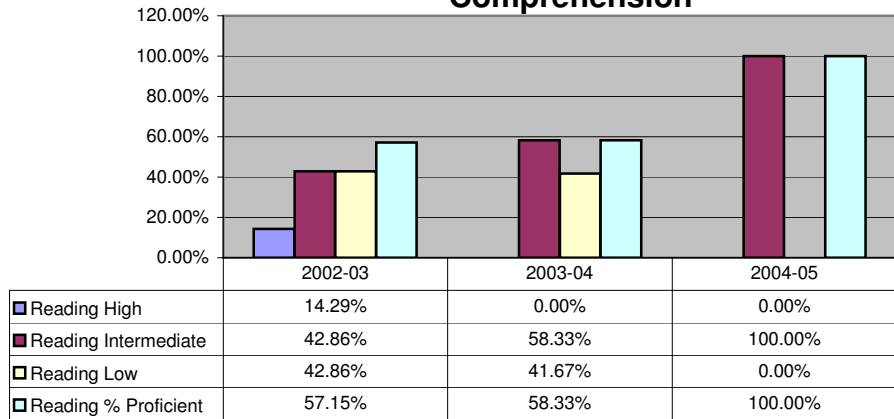
Hispanic/Latino - Science Total



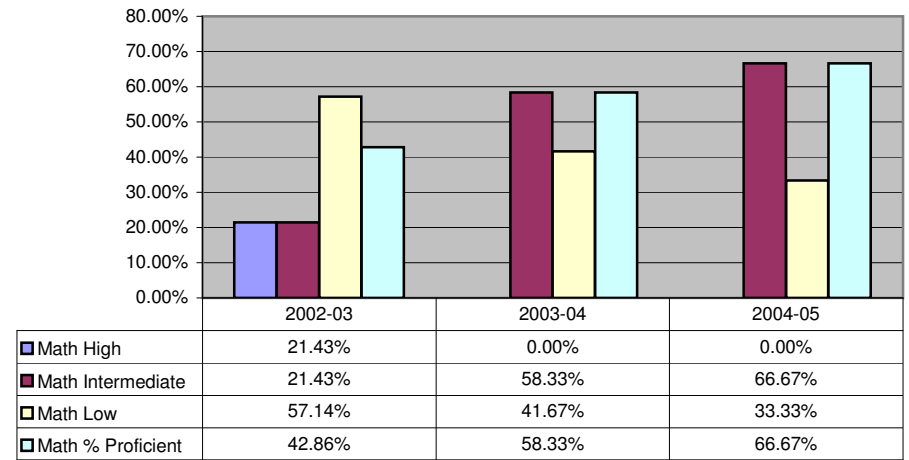
Annual Progress Report 2004-2005 Academic Year:

ITBS 4TH GRADE - Race/Ethnicity Disaggregated Achievement Data

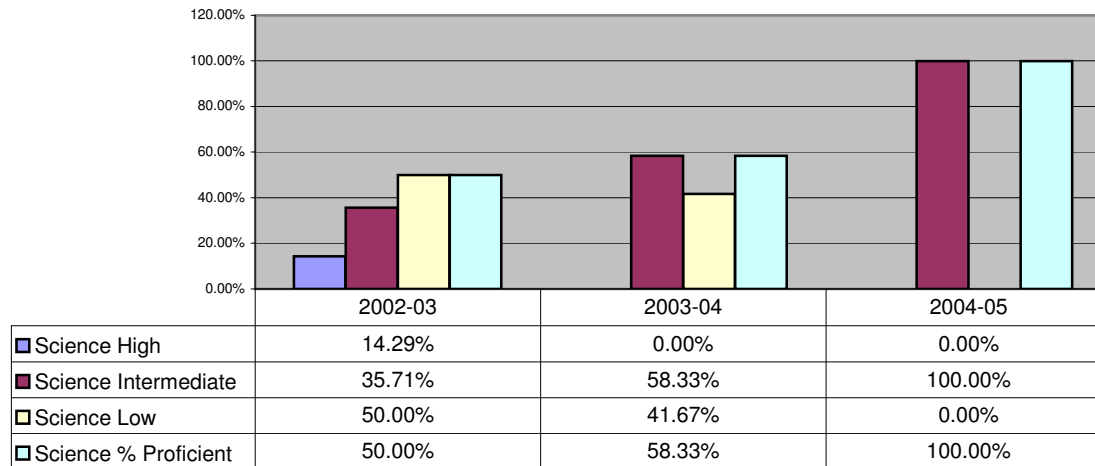
American Indian/Alaskan Native - Reading Comprehension



American Indian/Alaskan Native - Math Total



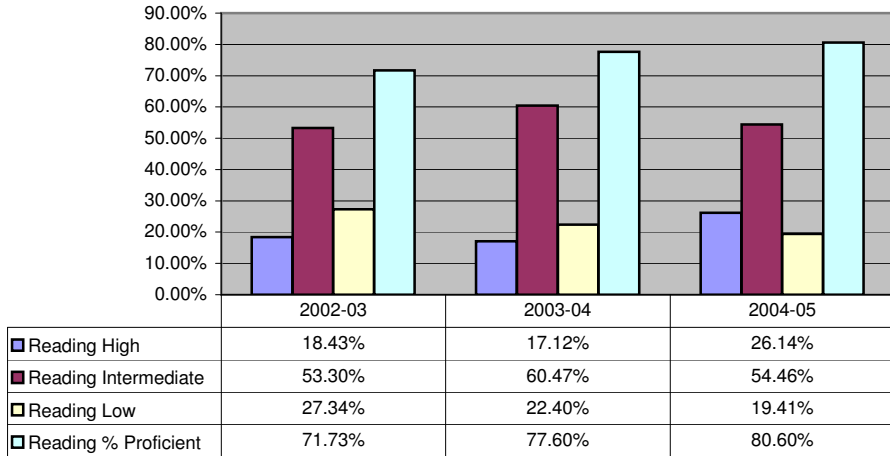
American Indian/Alaskan Native - Science Total



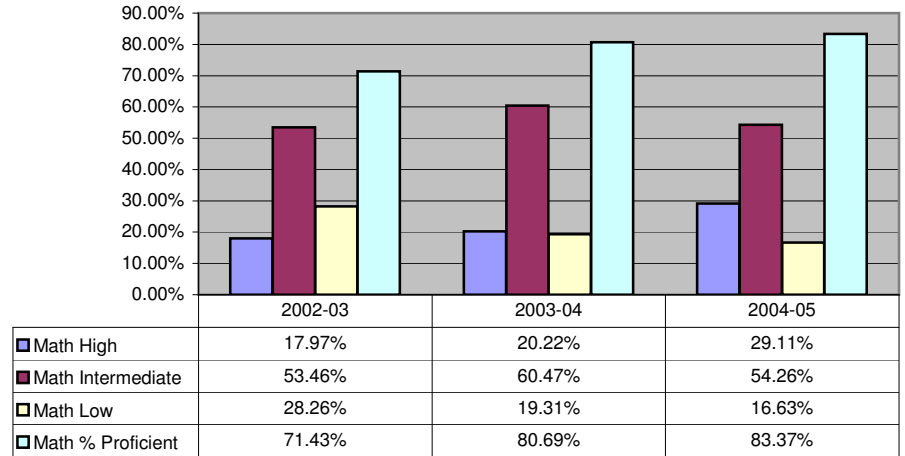
Annual Progress Report 2004-2005 Academic Year:

ITBS 4TH GRADE - Socioeconomic Status - NOT ELIGIBLE

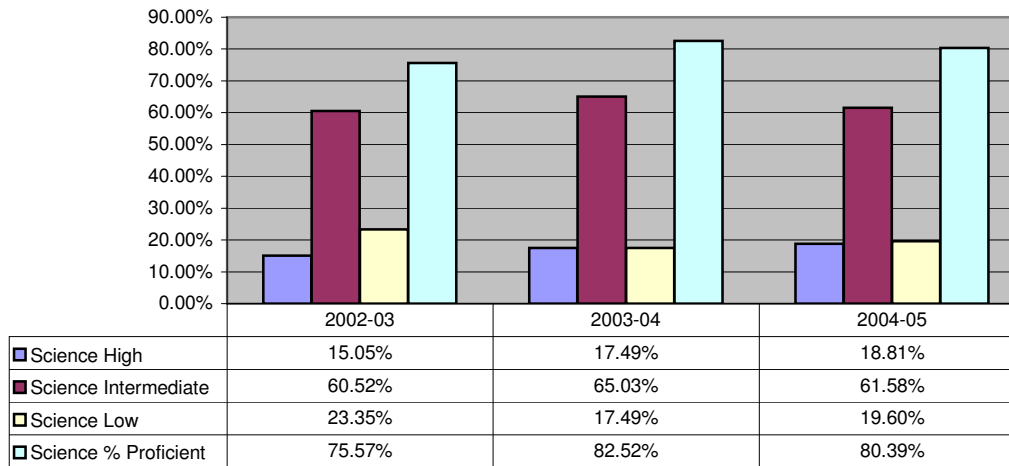
Reading Comprehension



Math Total

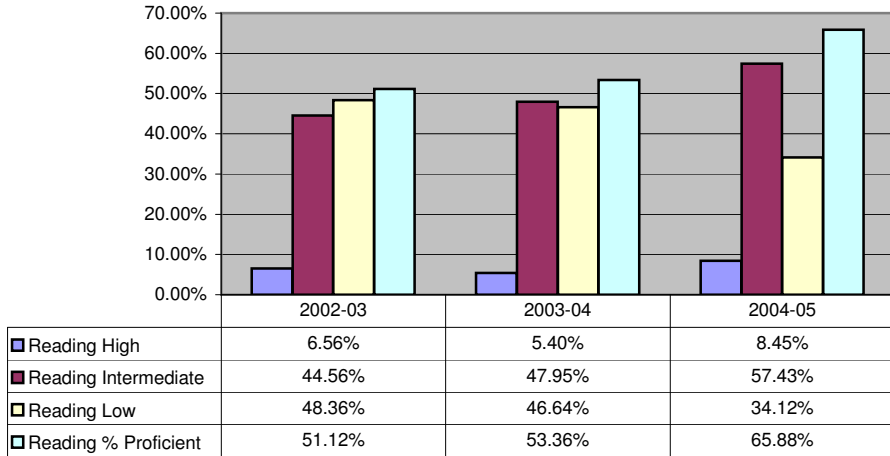


Science Total

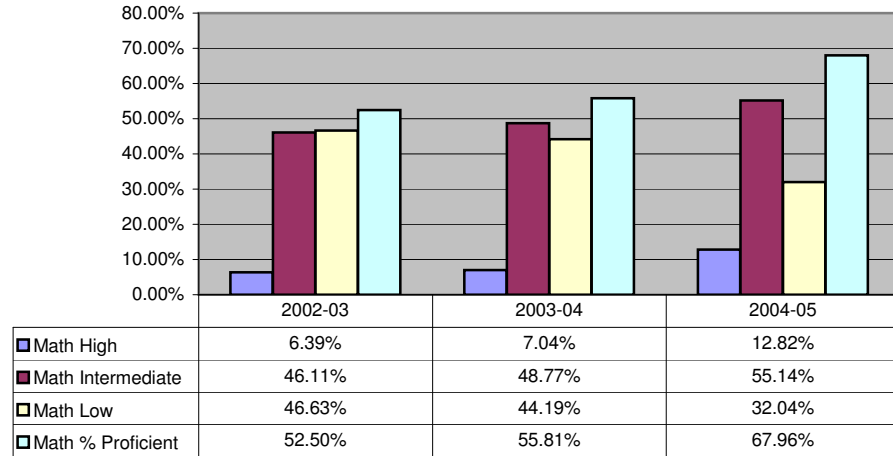


Annual Progress Report 2004-2005 Academic Year:
ITBS 4TH GRADE - Socioeconomic Status - ELIGIBLE

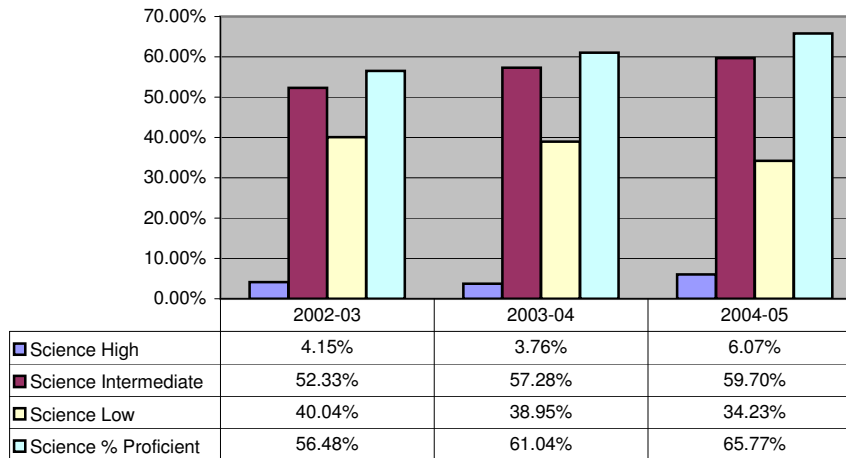
Reading Comprehension



Math Total



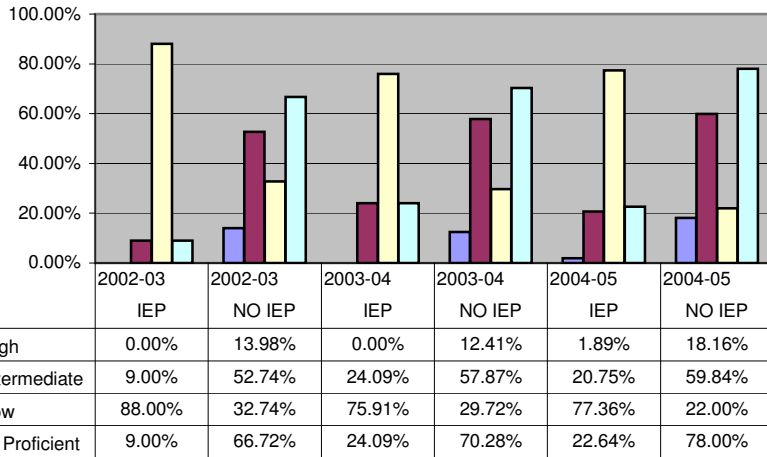
Science Total



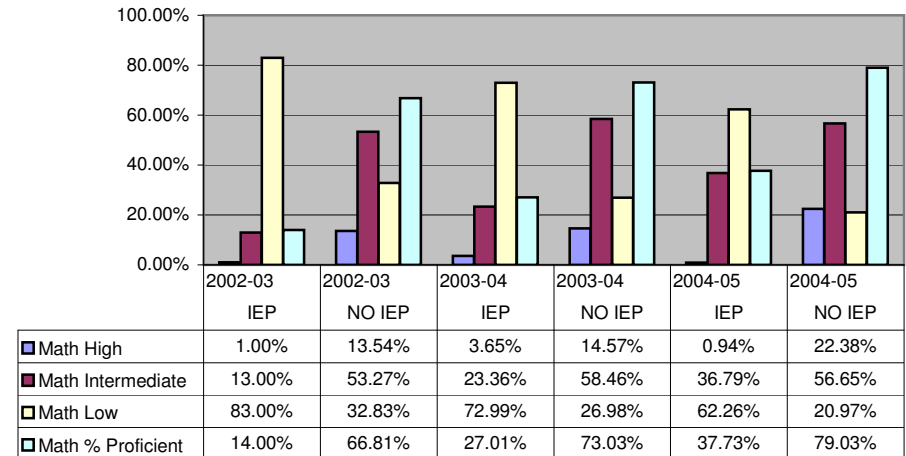
Annual Progress Report 2004-2005 Academic Year:

ITBS 4TH GRADE - Students With Disabilities

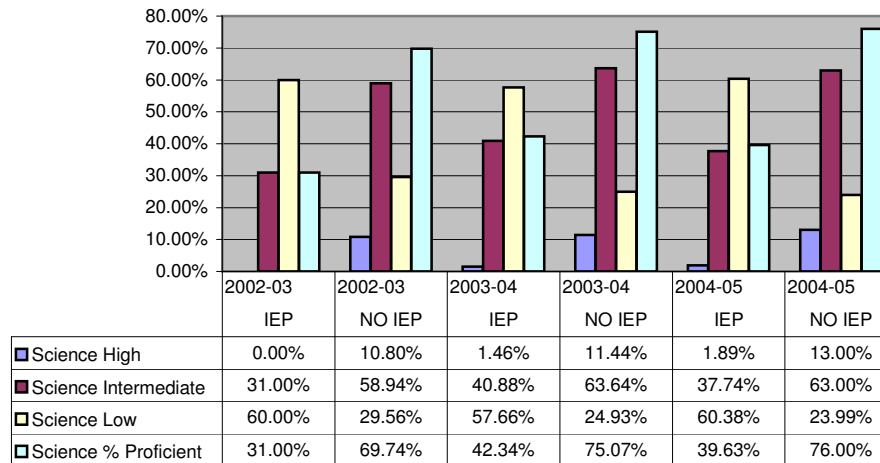
Reading Comprehension



Math Total

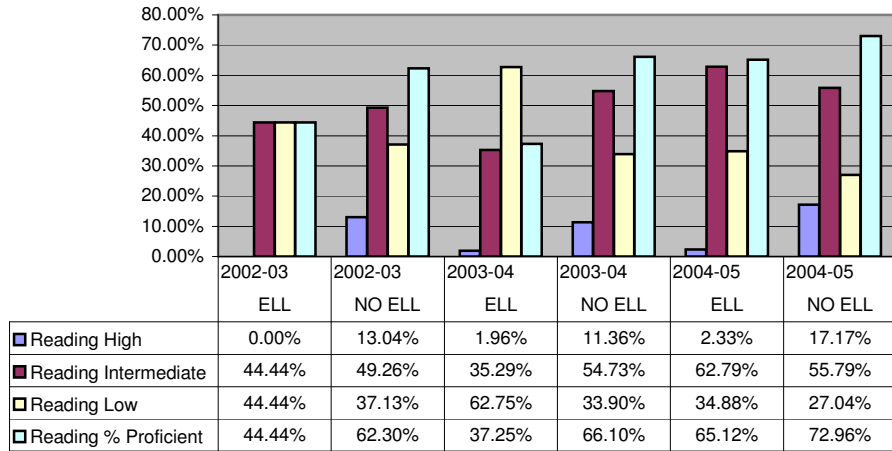


Science Total

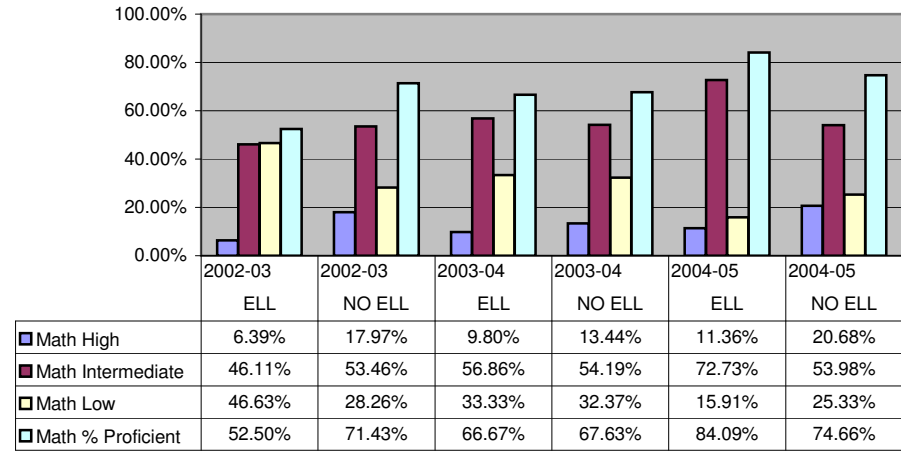


Annual Progress Report 2004-2005 Academic Year:
ITBS 4TH GRADE - ELL Students

Reading Comprehension



Math Total



Science Total

