

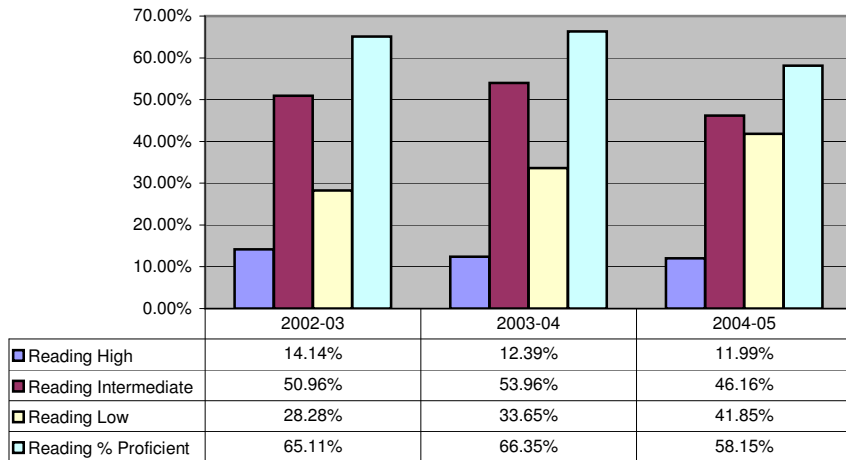
# Annual Progress Report - 2004-2005 Academic Year:

## ITED ACHIEVEMENT LEVELS AND PROFICIENCY 11TH GRADE: Reading, Math, Science

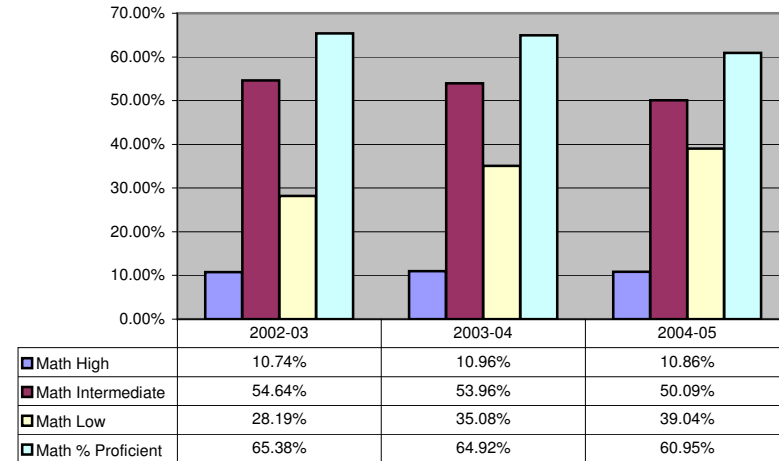
### Trend Lines and Participation Rates - Grade 11

School Year	# Enrolled	# Part	% Part
2002-2003	1089	1263	86.22%
2003-2004	1075	1050	97.67%
2004-2005	1076	1068	99.26%

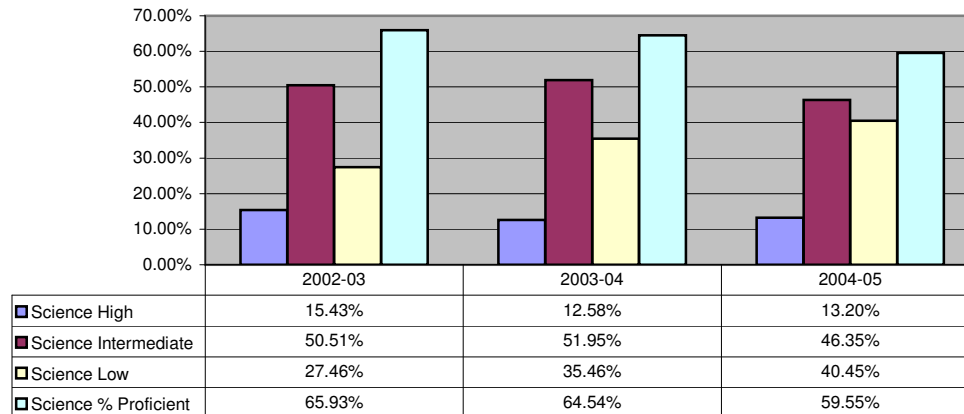
#### Reading Comprehension



#### Math Total

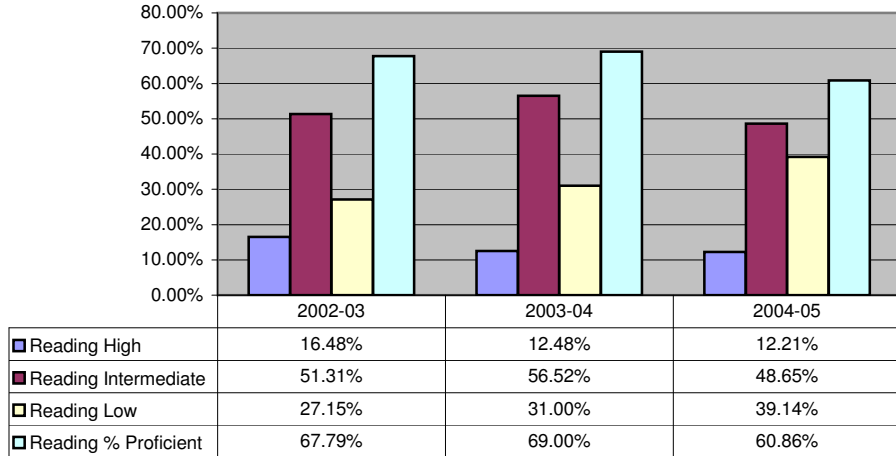


#### Science Total

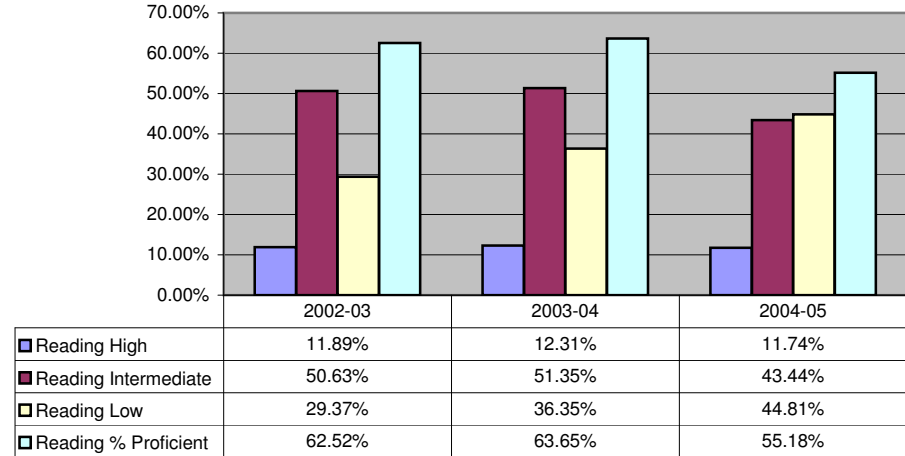


**Annual Progress Report - 2004-2005 Academic Year:**  
**ITED 11TH GRADE - Gender Disaggregated Achievement Data**

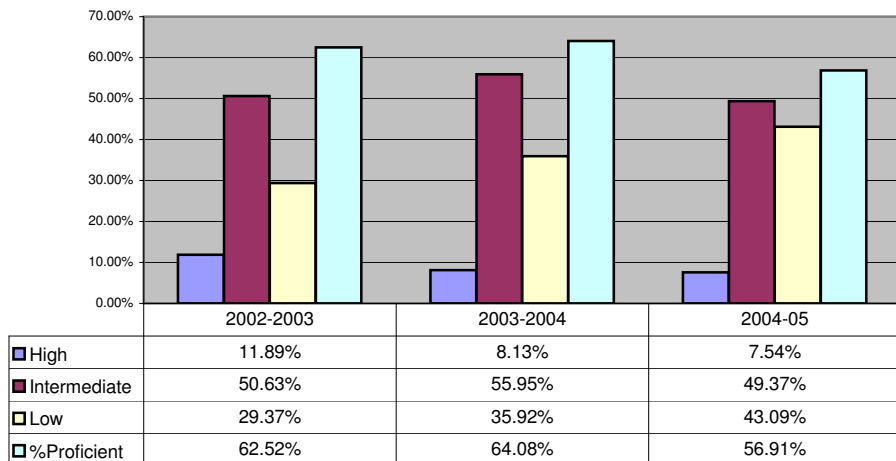
**Female - Reading Comprehension**



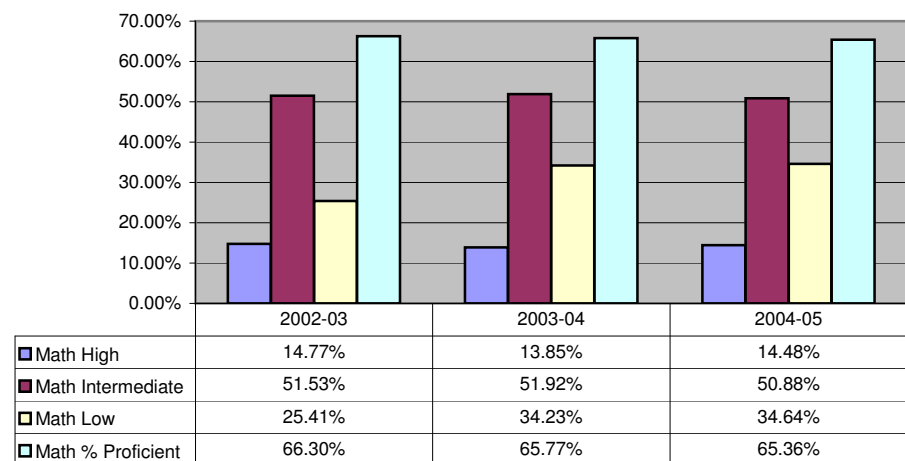
**Male - Reading Comprehension**



**Female - Math Total**



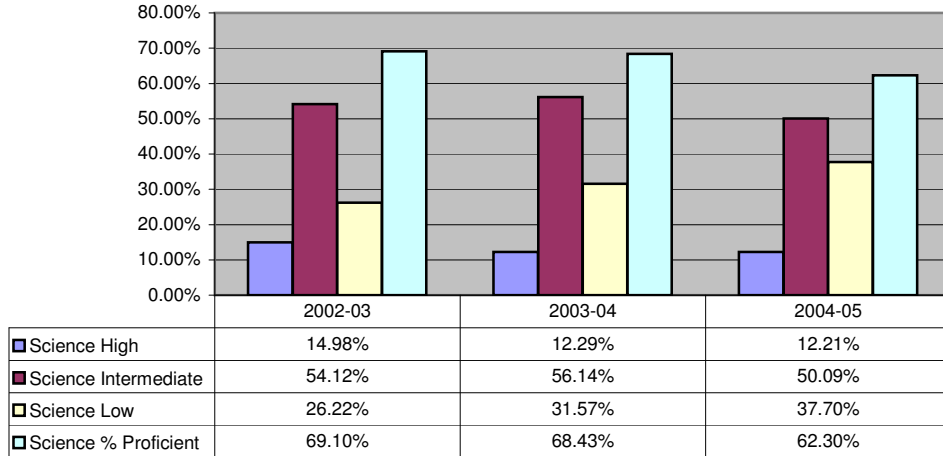
**Male - Math Total**



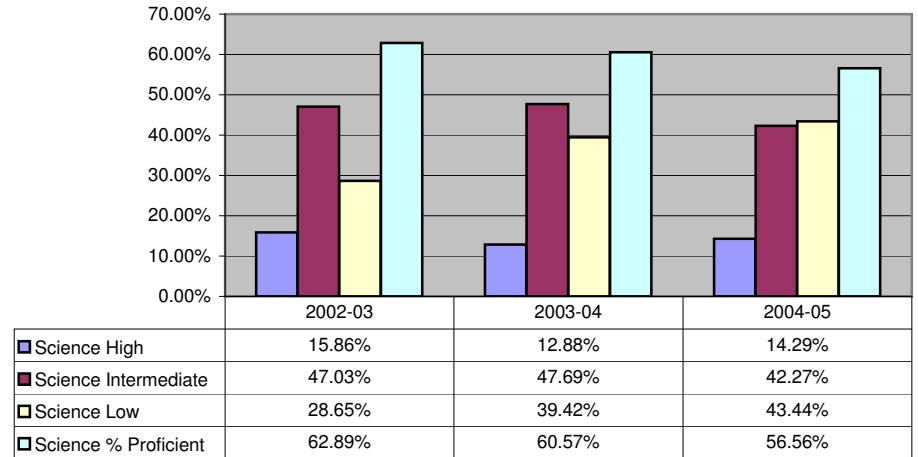
**Annual Progress Report - 2004-2005 Academic Year:**

**ITED 11TH GRADE - Gender Disaggregated Achievement Data**

**Female - Science Total**



**Male - Science Total**



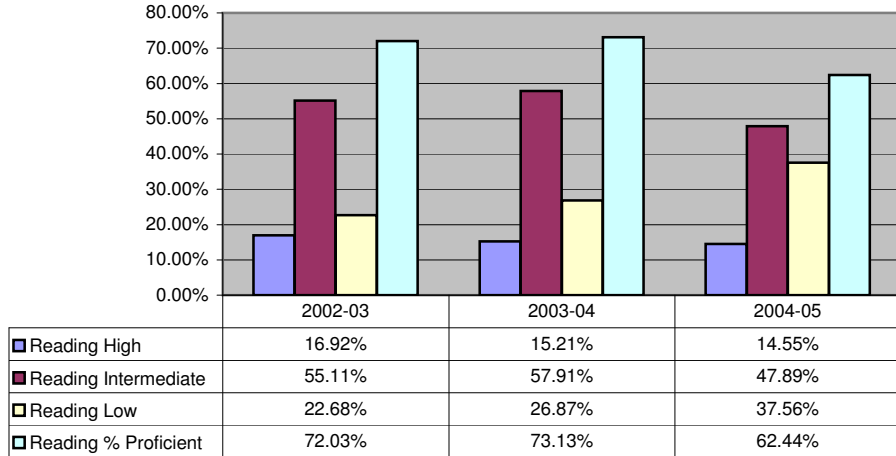
**Gender Disaggregated Percent Participating - Grade 11**

	Gender	# Part	# Enrolled	% Part
2002-03	Female	534	615	86.83%
	Male	555	648	85.65%
	Total	1089	1263	86.22%
2003-04	Gender	Participating	Enrolled	Percent
	Female	529	538	98.33%
	Male	521	537	97.02%
	Total	1050	1075	97.67%
2004-05	Gender	Participating	Enrolled	Percent
	Female	557	560	99.46%
	Male	511	516	99.03%
	Total	1068	1076	99.26%

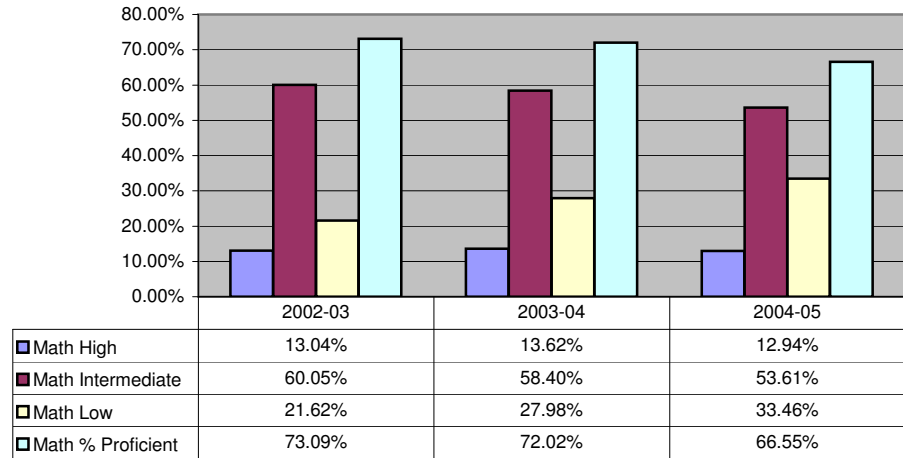
**Annual Progress Report - 2004-2005 Academic Year:**

**ITED 11TH GRADE - Race/Ethnicity Disaggregated Achievement Data**

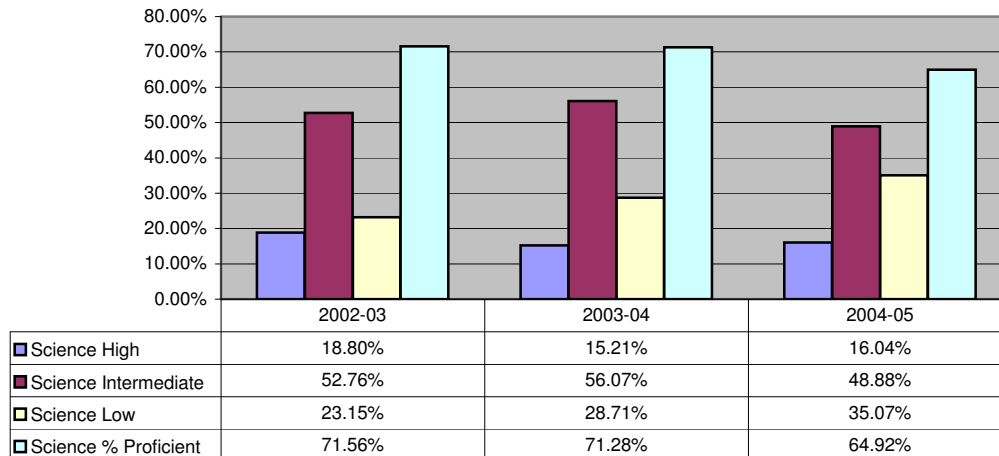
**Euro American - Reading Comprehension**



**Euro American - Math Total**



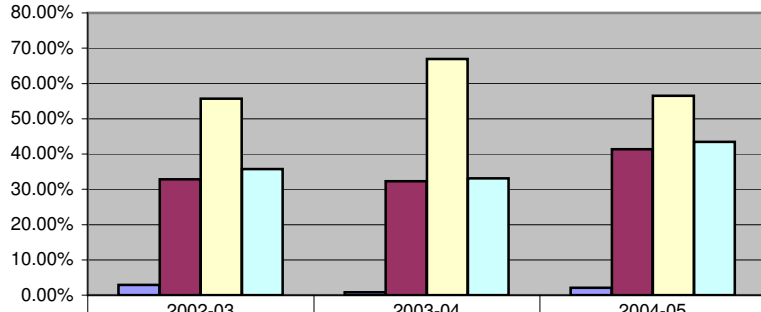
**Euro American - Science Total**



# Annual Progress Report - 2004-2005 Academic Year:

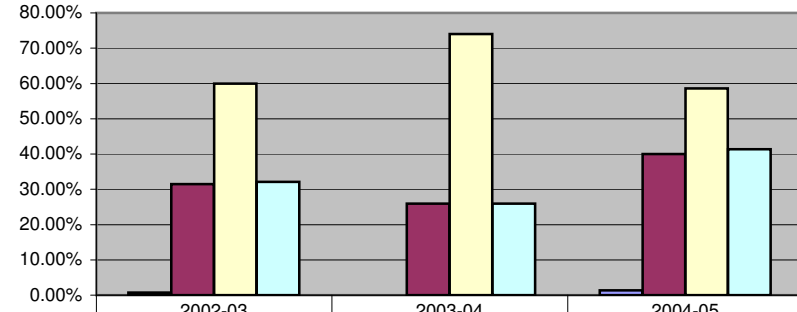
## ITED 11TH GRADE - Race/Ethnicity Disaggregated Achievement Data

### African American - Reading Comprehension



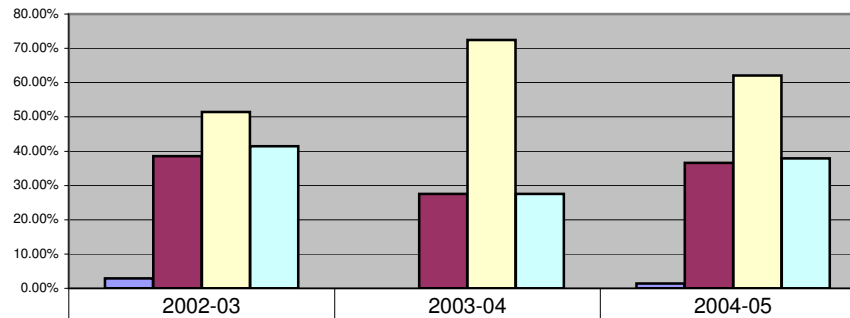
	2002-03	2003-04	2004-05
Reading High	2.86%	0.79%	2.07%
Reading Intermediate	32.86%	32.28%	41.38%
Reading Low	55.71%	66.93%	56.55%
Reading % Proficient	35.72%	33.07%	43.45%

### African American - Math Total



	2002-03	2003-04	2004-05
Math High	0.71%	0.00%	1.38%
Math Intermediate	31.43%	25.98%	40.00%
Math Low	60.00%	74.02%	58.62%
Math % Proficient	32.14%	25.98%	41.38%

### African American - Science Total

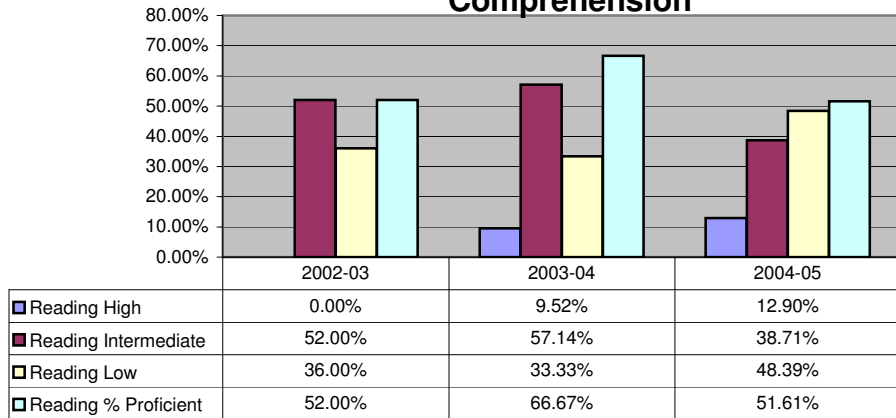


	2002-03	2003-04	2004-05
Series1	2.86%	0.00%	1.38%
Science Intermediate	38.57%	27.56%	36.55%
Science Low	51.43%	72.44%	62.07%
Science % Proficient	41.43%	27.56%	37.93%

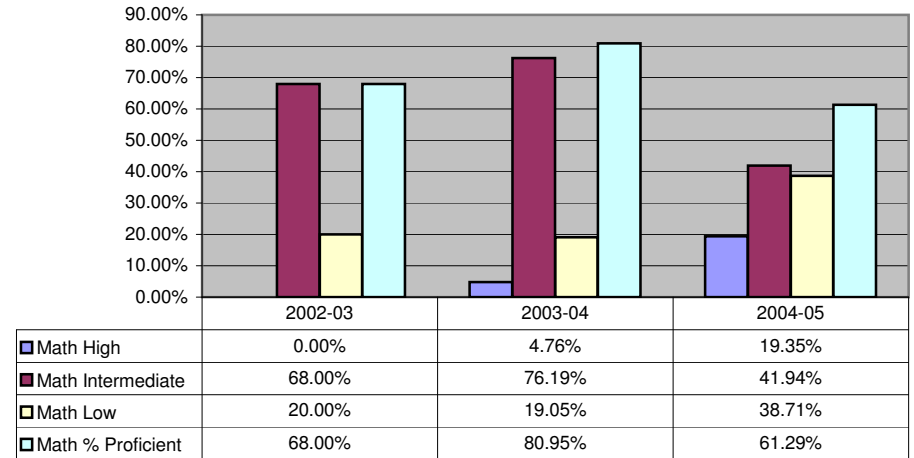
**Annual Progress Report - 2004-2005 Academic Year:**

**ITED 11TH GRADE - Race/Ethnicity Disaggregated Achievement Data**

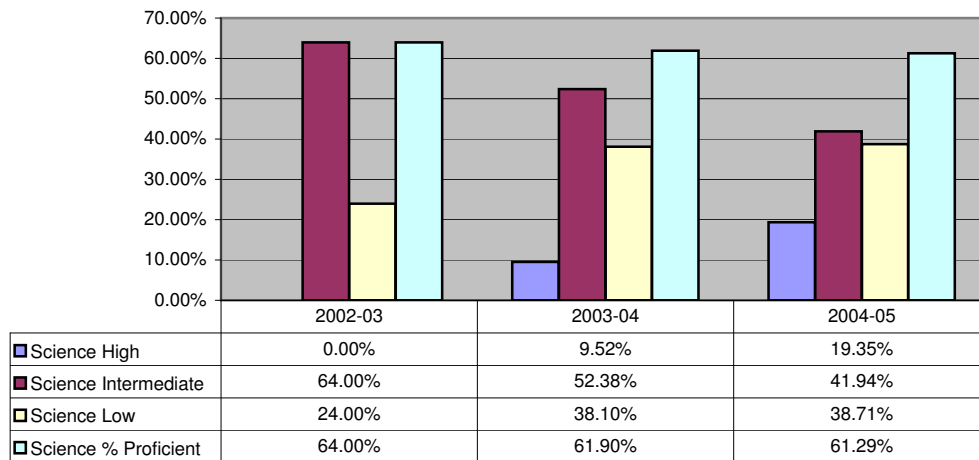
**Asian American/Pacific Islander - Reading Comprehension**



**Asian American/Pacific Islander - Math Total**



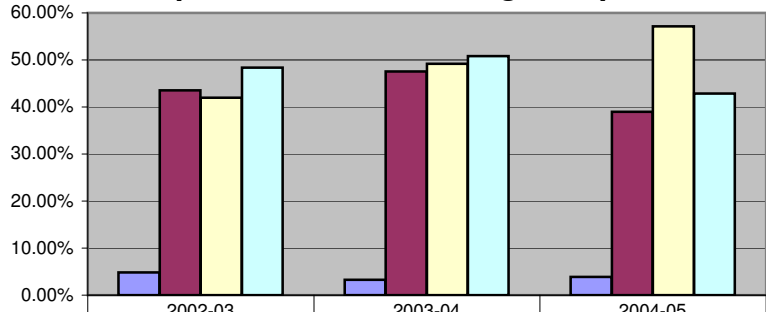
**Asian American/Pacific Islander - Science Total**



**Annual Progress Report - 2004-2005 Academic Year:**

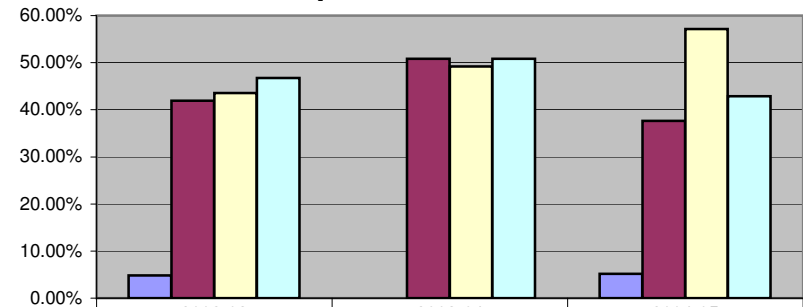
**ITED 11TH GRADE - Race/Ethnicity Disaggregated Achievement Data**

**Hispanic/Latino - Reading Comprehension**



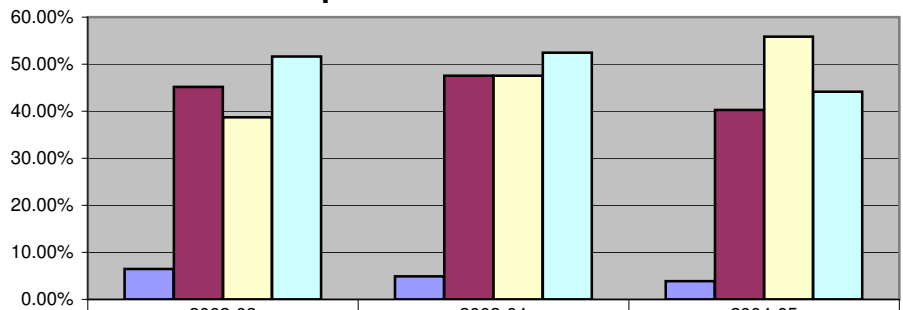
	2002-03	2003-04	2004-05
Reading High	4.84%	3.28%	3.90%
Reading Intermediate	43.55%	47.54%	38.96%
Reading Low	41.94%	49.18%	57.14%
Reading % Proficient	48.39%	50.82%	42.86%

**Hispanic/Latino - Math Total**



	2002-03	2003-04	2004-05
Math High	4.84%	0.00%	5.19%
Math Intermediate	41.94%	50.82%	37.66%
Math Low	43.55%	49.18%	57.14%
Math % Proficient	46.78%	50.82%	42.85%

**Hispanic/Latino - Science Total**

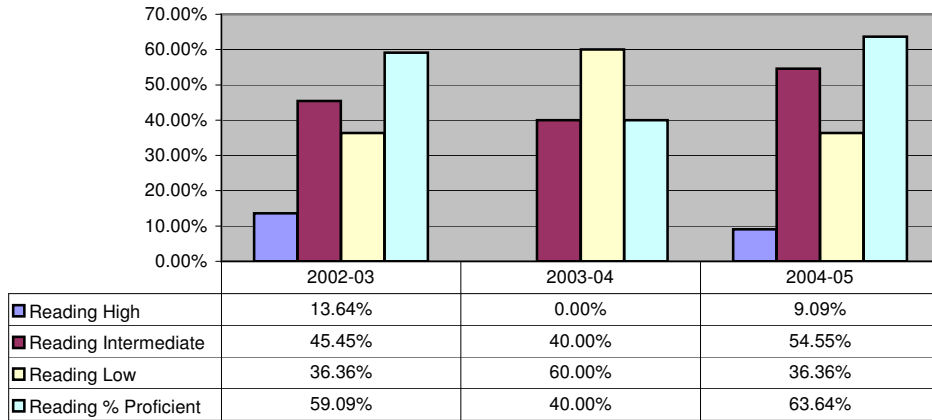


	2002-03	2003-04	2004-05
Science High	6.45%	4.92%	3.90%
Science Intermediate	45.16%	47.54%	40.26%
Science Low	38.71%	47.54%	55.84%
Science % Proficient	51.61%	52.46%	44.16%

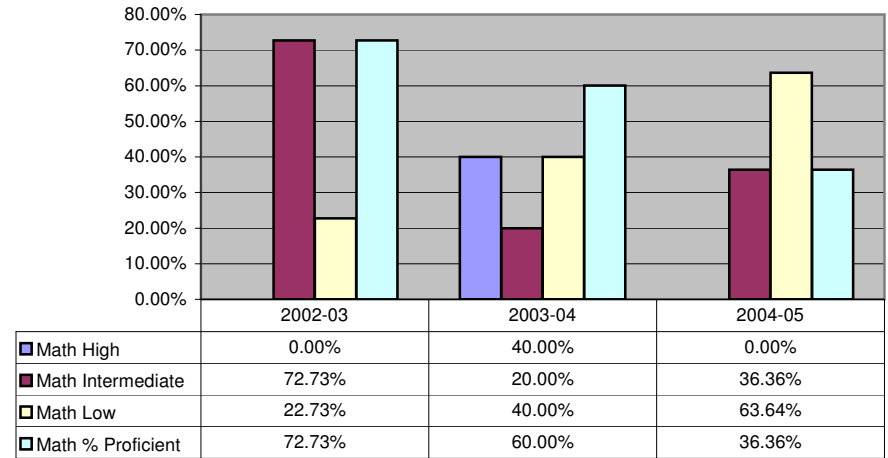
**Annual Progress Report - 2004-2005 Academic Year:**

**ITED 11TH GRADE - Race/Ethnicity Disaggregated Achievement Data**

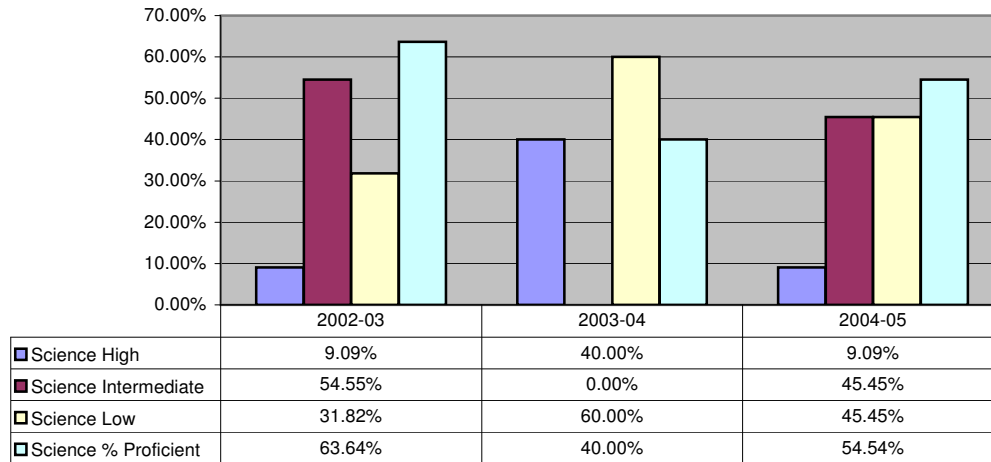
**American Indian/Alaskan Native - Reading Comprehension**



**American Indian/Alaskan Native - Math Total**



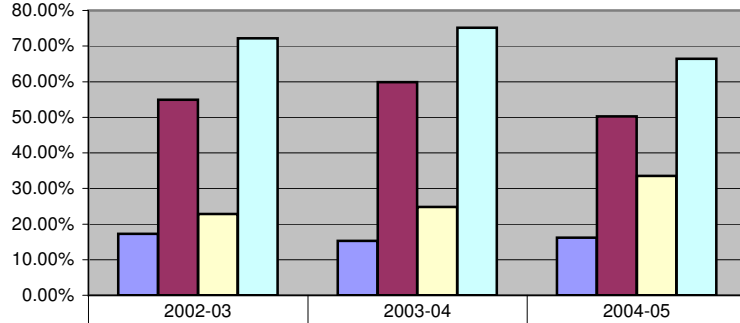
**American Indian/Alaskan Native - Science Total**



**Annual Progress Report - 2004-2005 Academic Year:**

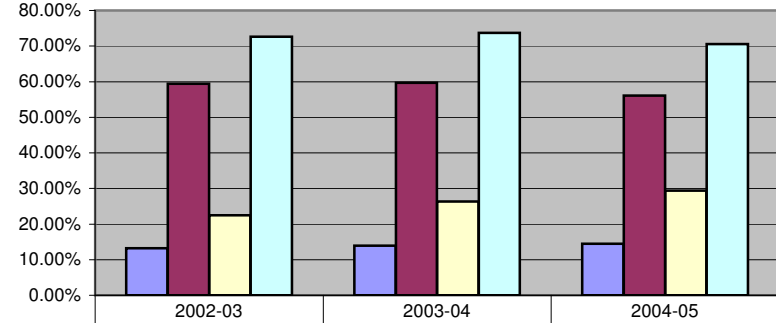
**ITED 11TH GRADE - Socioeconomic Status - NOT ELIGIBLE**

**Reading Comprehension**



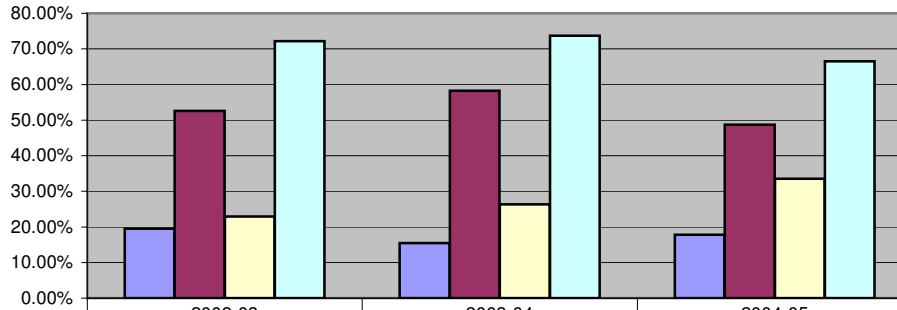
	2002-03	2003-04	2004-05
Reading High	17.28%	15.30%	16.19%
Reading Intermediate	54.88%	59.87%	50.28%
Reading Low	22.82%	24.83%	33.52%
Reading % Proficient	72.16%	75.17%	66.47%

**Math Total**



	2002-03	2003-04	2004-05
Math High	13.24%	13.96%	14.49%
Math Intermediate	59.39%	59.73%	56.11%
Math Low	22.45%	26.31%	29.40%
Math % Proficient	72.63%	73.69%	70.60%

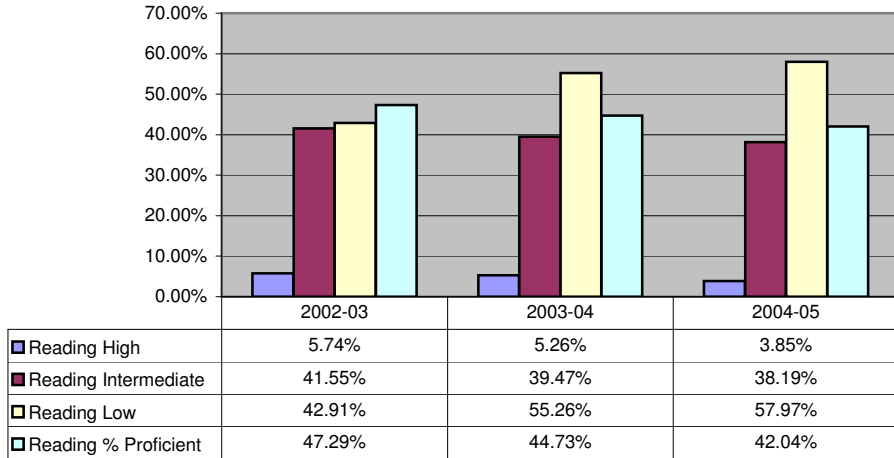
**Science Total**



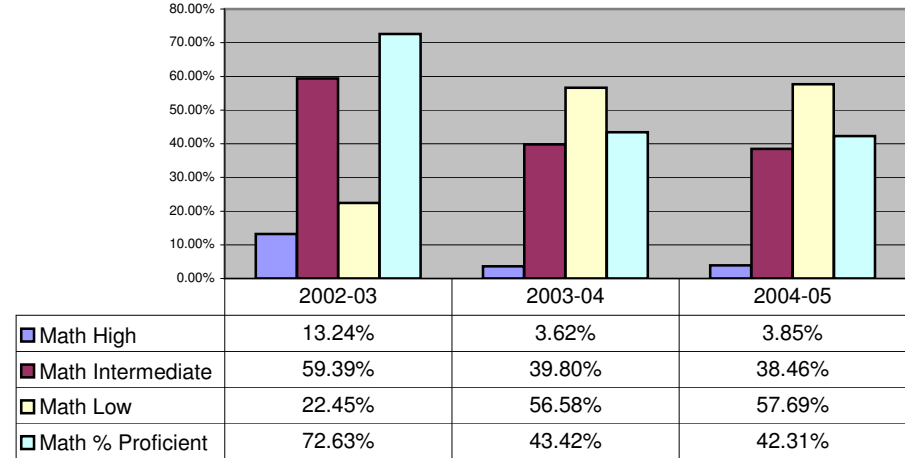
	2002-03	2003-04	2004-05
Science High	19.55%	15.44%	17.76%
Science Intermediate	52.59%	58.26%	48.72%
Science Low	22.95%	26.31%	33.52%
Science % Proficient	72.14%	73.70%	66.48%

**Annual Progress Report - 2004-2005 Academic Year:**  
**ITED 11TH GRADE - Socioeconomic Status - ELIGIBLE**

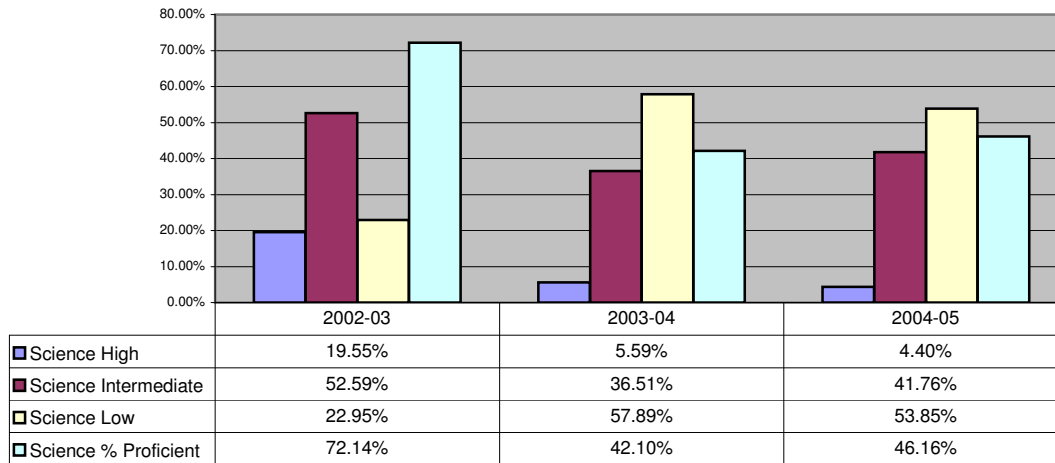
**Reading Comprehension**



**Math Total**



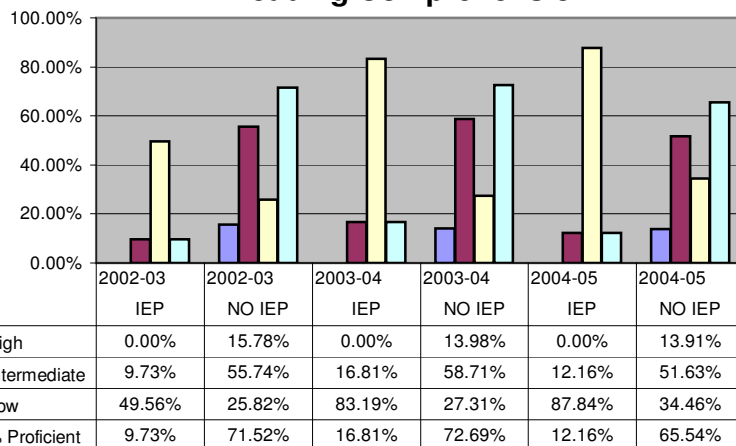
**Science Total**



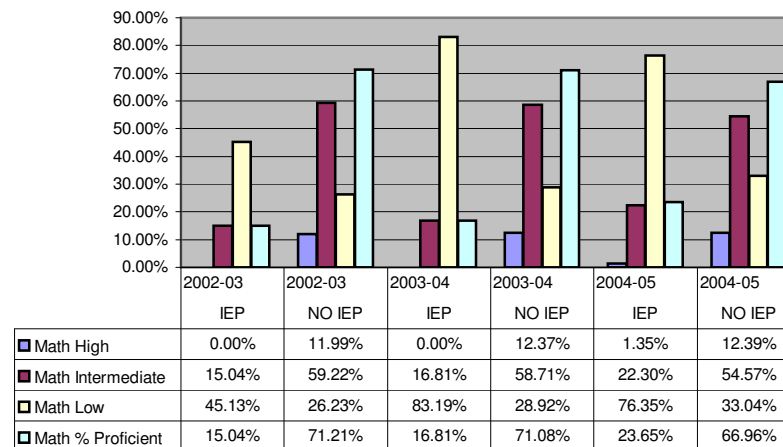
## Annual Progress Report - 2004-2005 Academic Year:

### ITED 11TH GRADE - Students With Disabilities

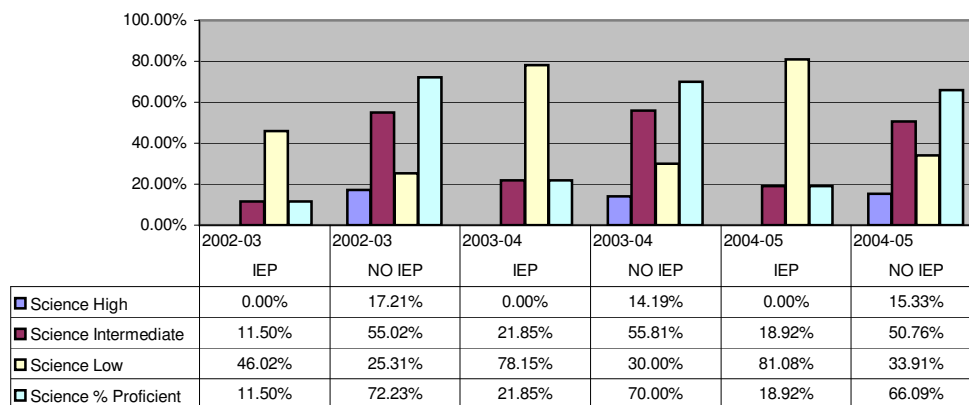
#### Reading Comprehension



#### Math Total

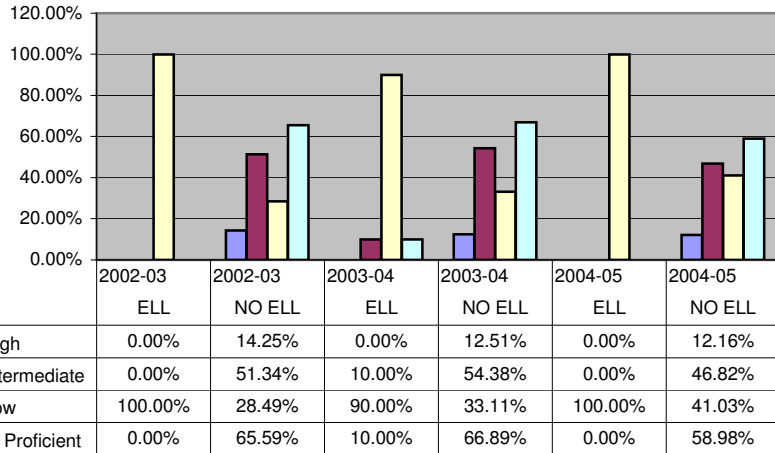


#### Science Total

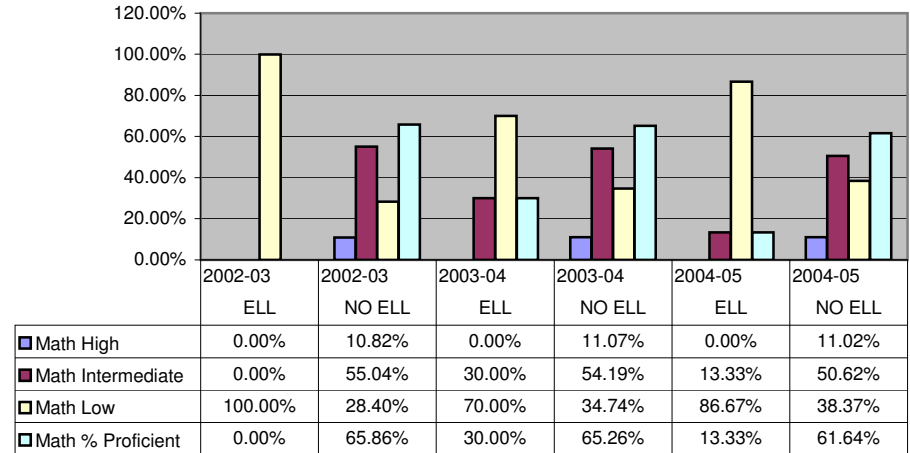


**Annual Progress Report - 2004-2005 Academic Year:**  
**ITED 11TH GRADE - ELL Students**

**Reading Comprehension**



**Math Total**



**Science Total**

